

Fitting for top-running wooden doors up to 100 kg (220 lbs.), with surface mounted running track. Sound attenuation. Wall mounting. Minimal installation height.

Product highlights



Comfort

Outstanding living comfort thanks to effective exclusion of sound, drafts, odors and unwanted light incidence



Flexibility

Running tracks for wall mounting with integrated clip-on system

Technical specifications



Max. 100 kg (220 lbs.)



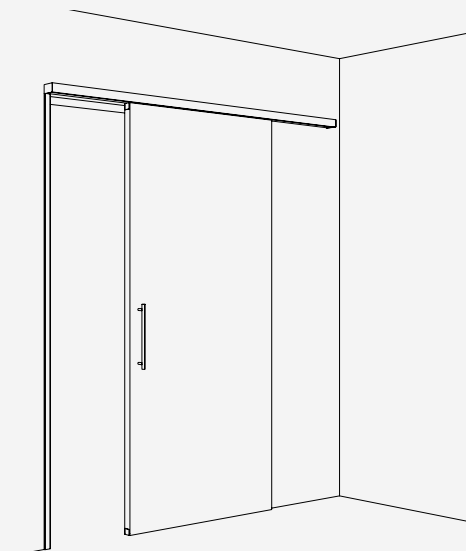
Max. 2500 mm (8' 2 7/16")



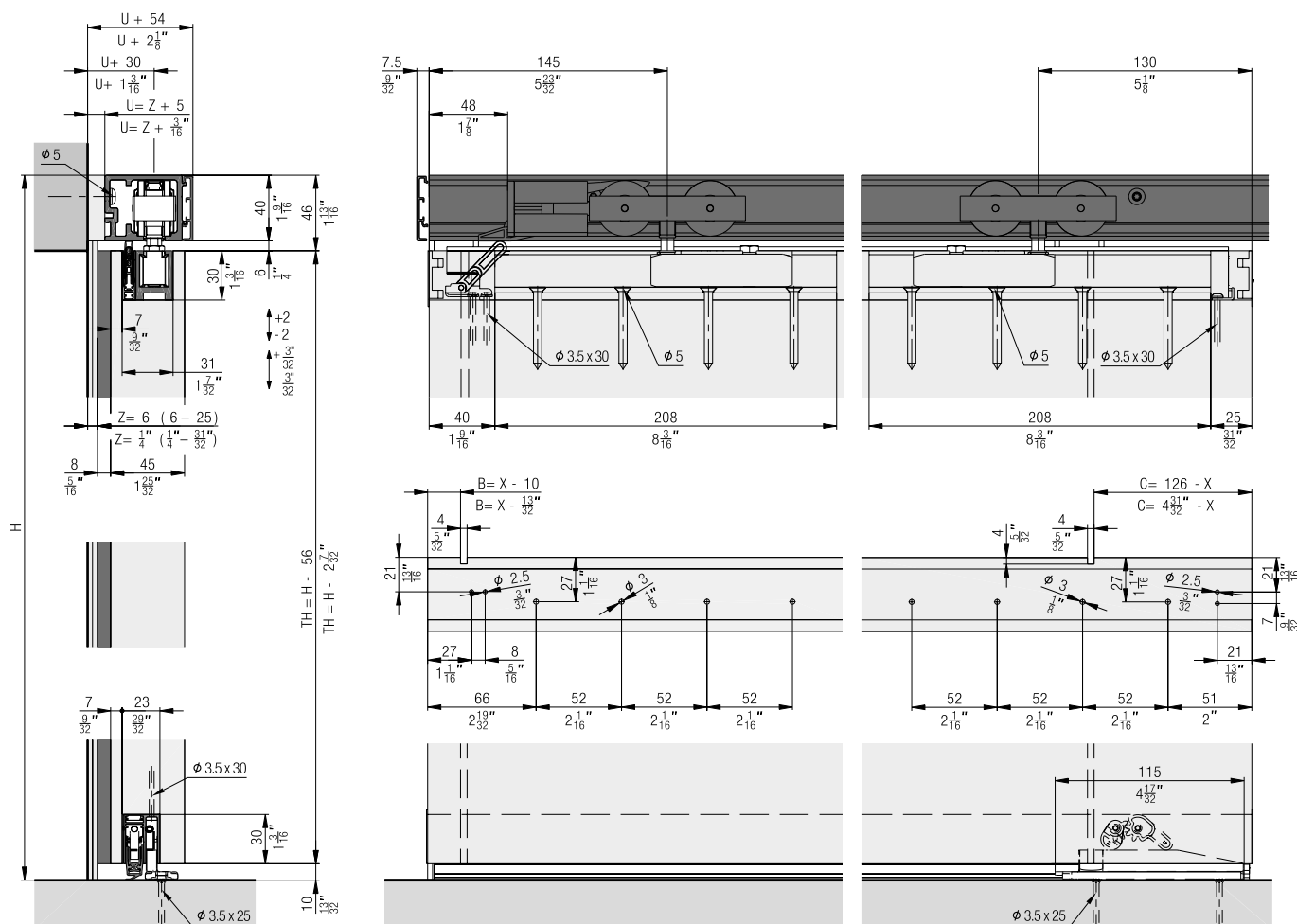
750–1500 mm (2' 5 17/32" to 4' 11 1/16")
Inside clearance (LMB)



44–50 mm (1 23/32" to 1 31/32")



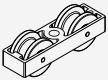
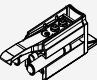
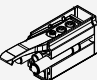
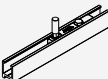

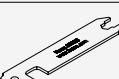
Installation examples





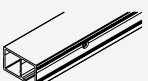
Set for 1 wooden door up to 100 kg (220 lbs.)

	No.
Hawa Junior 100 B/B Pocket Acoustics, for 1 door	30427


Set consisting of:

		30427	No.
	Running gear, 2-wheeled, M10, ball bearing	2	30137
	SoftStop Hawa Junior 100 Acoustics, with ramp and adjustable retention spring	1	30132
	SoftStop Hawa Junior 80/100, with adjustable retention spring	1	27771
	Suspension profile, plate with screw M10	2	30379
	Cover cap set, plastic, aluminum look, 4-piece set	1	30483
	Locking wrench to suspension	1	10778

Running tracks

		mm (inch)	No.
	Running track, wall mounting, aluminum, anodized, pre-drilled	2,000 (6' 6 3/4 ")	27673
		2,500 (8' 2 7/16 ")	30323
		3,000 (9' 10 1/8 ")	27672
		6,000 (19' 8 7/32 ")	27671
		4,000 (13' 1 15/32 ")	30324
		cut to size	27695
	Running track, wall mounting, extended spacing of +11 mm (7/16") between door and wall, aluminum, anodized, pre-drilled	2,500 (8' 2 7/16 ")	30613
		6,000 (19' 8 7/32 ")	30614
		cut to size	30666
	Running track, wall mounting, extended spacing of +20 mm (25/32") between door and wall, aluminum, anodized, pre-drilled	2,500 (8' 2 7/16 ")	30615
		6,000 (19' 8 7/32 ")	30616
		cut to size	30667

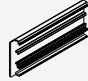
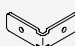


Panels

		mm (inch)	No.
	Clip-on panel to running track, aluminum, anodized	2,000 (6' 6 3/4 ")	27689
		2,500 (8' 2 7/16 ")	30328
		3,000 (9' 10 1/8 ")	27688
		4,000 (13' 1 15/32 ")	30330
		6,000 (19' 8 7/32 ")	27687
		cut to size	27698

Panel end component set, 95 mm (3 3/4"), can be shortened, aluminum, wall mounting

	No.
Panel end component set, left, 95 mm (3 3/4"), aluminum, anodized	30434
Panel end component set, right, 95 mm (3 3/4"), aluminum, anodized	30435

Set consisting of:

		30434	30435	No.
	Panel end component, left, 95 mm (3 3/4"), aluminum, anodized, can be cut to size	1		30131
	Bracker connector, steel, zinc-plated	1	1	057.3051.101
	Screw, M4x2.6 mm (5/32"x 1/8"), steel, zinc-plated	2	2	011.0101.171
	Panel end component, right, 95 mm (3 3/4"), aluminum, anodized, can be cut to size		1	30398

**Sets left type
(horizontal seal set)**

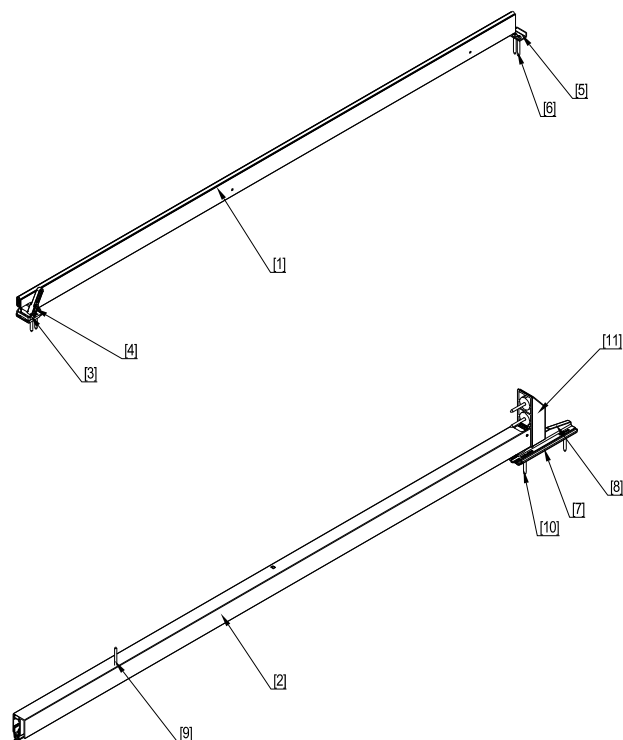
		No.
	Seal, Hawa Acoustics XS, left	30437
	Seal, Hawa Acoustics S, left	30439
	Seal, Hawa Acoustics M, left	30441
	Seal, Hawa Acoustics L, left	30443
	Seal, Hawa Acoustics XL, left	30445
	Seal, Hawa Acoustics XXL, left	31482
	Seal, Hawa Acoustics XXXL, left	31484

**Sets right type
(horizontal seal set)**

		No.
	Seal, Hawa Acoustics XS, right	30436
	Seal, Hawa Acoustics S, right	30438
	Seal, Hawa Acoustics M, right	30440
	Seal, Hawa Acoustics L, right	30442
	Seal, Hawa Acoustics XL, right	30444
	Seal, Hawa Acoustics XXL, right	31481
	Seal, Hawa Acoustics XXXL, right	31483

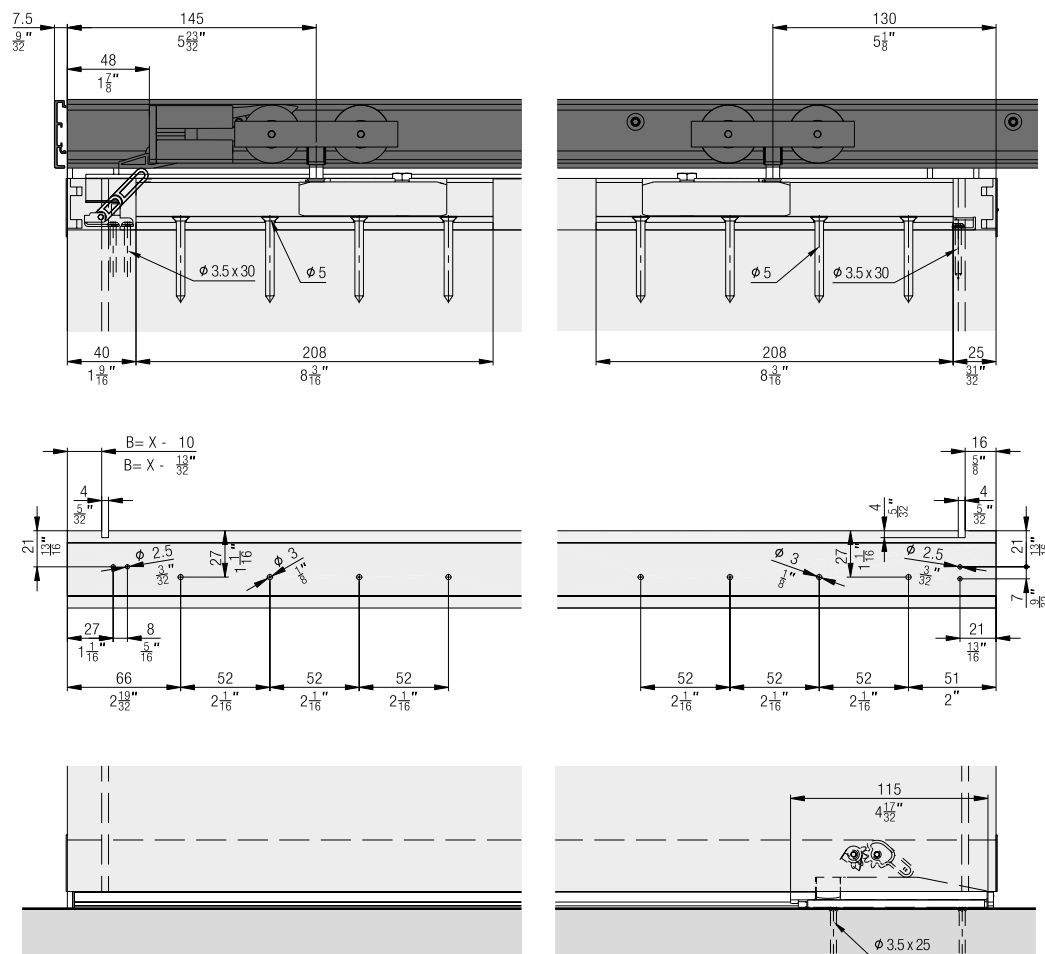
Vertical seal for seal set, left, right set type

		No.
	Seal vertical, Hawa Acoustics, 7700 mm (25' 3 5/32"), silicone, black	30300

**Hawa Acoustics horizontal seal set
consisting of:**


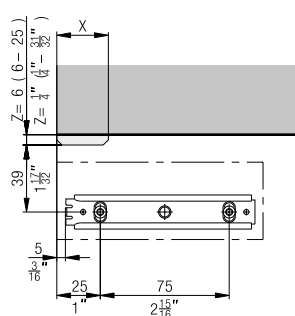
Position Position	Bezeichnung Désignation Designation	Anzahl Numéro Number	Type Type Type		
1	Hubdichtung Joint de levage Header seal	1	Links/Rechts Gauche/Droite Left/Right		
			XS	30454	
			S	30385	
			M	30455	
			L	30456	
			XL	30457	
			XXL	31568	
			XXXL	31571	
2	Senkdichtung Joint d'abaissement Floor seal	1	Links Gauche Left		Rechts Droite Right
			XS	30446	XS 30447
			S	30387	S 30383
			M	30448	M 30449
			L	30450	L 30451
			XL	30452	XL 30453
			XXL	31569	XXL 31572
			XXXL	31570	XXXL 31573
3, 4, 5, 6	Kleinteileset oben Kit pour petites pièces, supérieur Small parts set top	1	Links Gauche Left	30390	Rechts Droite Right 30392
7, 8, 9, 10	Kleinteileset unten Kit pour petites pièces, inférieur Small parts set bottom	1	Links Gauche Left	30416	Rechts Droite Right 30417
11	Pocketadapter Adaptateur pour caisson à galandage Pocket adapter	1	Links/Rechts Gauche/Droite Left/Right	30418	

Partially opening view

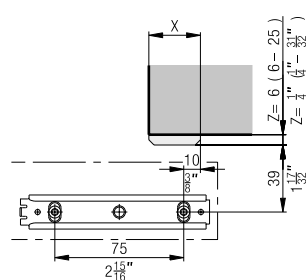


Bottom guide assembly detail

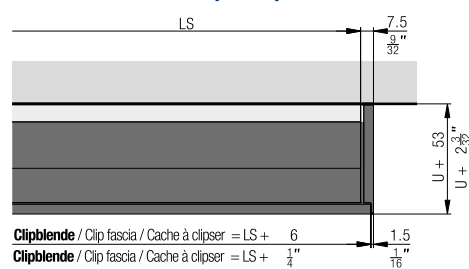
Ganzöffnend
Ouverture complète
Fully opening



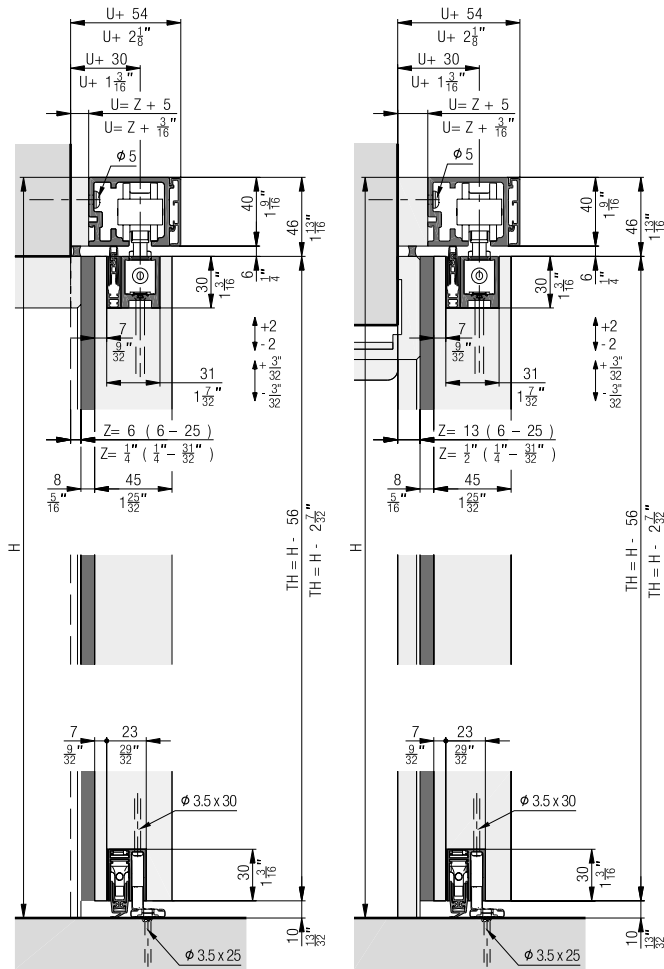
Teilöffnend
Ouverture partielle
Partially opening



Calculations of clip-on panels

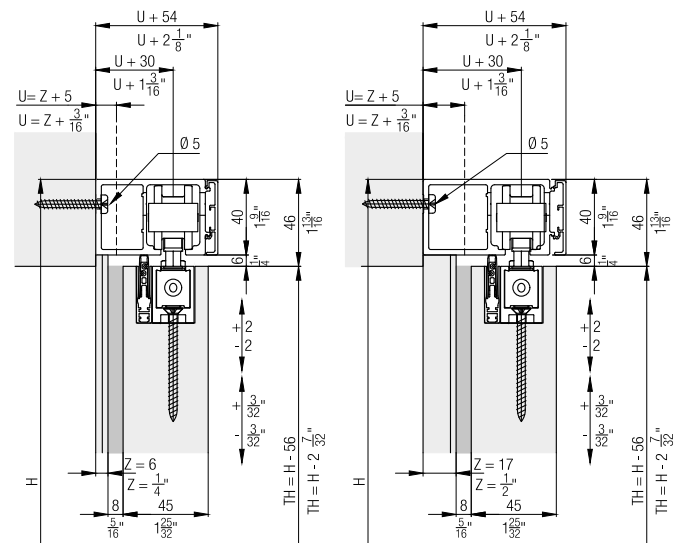


Block frame / closed frame details



Further installation examples

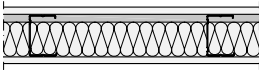
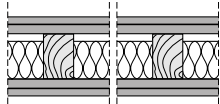

Wall mounting rails with extended spacing of +11 mm/+20 mm (7/16"/25/32") between door and wall.



Room-to-room sound attenuation

All reference values have been measured on the basis of a practical design. The R_w sound attenuation values specify the expected sound attenuation between the two rooms which are influenced by the wall, the system and the choice of door leaf.

Reference values tested with a lightweight construction wall in accordance with James Hardy (type 1 H 31 / R_w 52 dB), size 2.5 x 2.45 m in accordance with DIN EN ISO 10140-2. Clearance 2.0 x 1.0 m. The sound attenuation relates to the entire structure and specifies which sound attenuation can be expected between the two rooms.

Example walls	System	Thickness of door leaf	Type of door leaf	Estimated sound attenuation effect
				Room to room
				Rw
Wall with minimum acoustic rating of Rw 52 dB	without Hawa Acoustics	39 mm	Single door leaf without sealing system	≈ 18 dB
Lightweight construction wall with metal stand 	Hawa Porta 60 HMD Acoustics Hawa Porta 100 HMD Acoustics		Single door leaf, approx. 19 kg/m² acoustic rating of Rw 29 dB	≈ 31 dB
			Chipboard, approx. 25 kg/m² No defined acoustic rating	≈ 30 dB
			Door leaf with medium sound attenuation level approx. 25 kg/m², acoustic rating of Rw 39 dB	≈ 34 dB
Lightweight construction wall with wooden stand 	Hawa Junior 100 B Acoustics Hawa Porta 60 HMD Acoustics Hawa Porta 100 HMD Acoustics	44 mm	Single door leaf, approx. 20 kg/m² acoustic rating of Rw 29 dB	≈ 30 dB
	Hawa Junior 100 B Acoustics	50 mm	Door leaf with medium sound attenuation level approx. 28 kg/m², acoustic rating of Rw 40 dB	≈ 34 dB
			Door leaf with high sound attenuation level approx. 33 kg/m², acoustic rating of Rw 42 dB	≈ 35 dB
Solid wall  Acoustic ratings for wall construction according to manufacturer. The acoustic values may vary if installed in different wall types.	without Hawa Acoustics	39 mm	Single door leaf without sealing system	≈ 20 dB
	Hawa Porta 60 HMT Pocket Acoustics Hawa Porta 100 HMT Pocket Acoustics		Single door leaf, approx. 19 kg/m², acoustic rating of Rw 29 dB	≈ 31 dB
			Door leaf with medium sound attenuation level approx. 25 kg/m², acoustic rating of Rw 39 dB	≈ 37 dB
	Hawa Junior 100 B Pocket Acoustics Hawa Porta 60 HMT Pocket Acoustics Hawa Porta 100 HMT Pocket Acoustics	44 mm	Single door leaf, approx. 20 kg/m² acoustic rating of Rw 29 dB	≈ 32 dB
		50 mm	Door leaf with medium sound attenuation level approx. 28 kg/m², acoustic rating of Rw 40 dB	≈ 39 dB
	Hawa Junior 100 B Pocket Acoustics		Door leaf with high sound attenuation level approx. 33 kg/m², acoustic rating of Rw 42 dB	≈ 41 dB

Planning/execution

Further information about the product can be found on www.hawa.com.